

# Rose Lawn

## A friendly community

Sidmouth, Devon



# Hello,

Choosing a care home is one of the biggest decisions you'll ever make, and I'm delighted that you're considering Rose Lawn

## A little bit about us

Rose Lawn is a small, cosy community in Sidmouth. We can accommodate up to 29 people, and this means each person can feel known as a unique individual. We invite you to come and visit to see if we're a good fit, and if we're not – we're happy to help guide you to somewhere you may prefer. Our aim is to support you in finding the best care for you.

**If you have any questions, or would like a chat, do get in touch.**



Chaslyn  
Registered  
Manager



“I've worked at Rose Lawn since 2016 and have over 13 years' experience working in the sector. My biggest achievement would be completing my NVQ in Health and Social Care.”

# Location, location, location

1. The nearby bowling green
2. Connaught Gardens Archway
3. The Donkey Sanctuary
4. View of Sidmouth seafront and cliffs

Rose Lawn is less than a mile from the seafront of Sidmouth and a short walk away from the High Street. We're located next to Sidmouth RFC, with views over the grounds and the distant bowling green much enjoyed during sunny days.





# We care about people, not profits

Rose Lawn is part of Christian charity Keychange. At Keychange, we've been creating caring communities for over a century.

Every penny we make goes back into providing excellent care that's as affordable as possible, and all our staff are committed to living out the Christian values of unconditional love and support for all.

“Rose Lawn has been home for my mum for five months now. It is an exceptional place. Knowing that Mum has first-class care 24 hours a day is priceless... The range of activities organised every week is amazing. From crafts, hymn singing, Pilates, musical performances, and quizzes to dance demonstrations, there's never a dull moment (but no pressure to join in if it's not your thing).”

Daughter of resident



## Transforming lives across all generations

Keychange also provides caring communities for young adults and women facing homelessness. So it's good to know that you're part of an organisation working to build a better future for people of all ages.



# The right care for you

We want you to feel happy and well cared for, which is why we tailor your care plan to you.



## The types of care we offer include:

### Residential care

If you're finding it hard to manage at home, staying with us will ensure there is 24-hour support available for when you need it.



### Dementia care

Our 24-hour specialist care helps you cope with the challenges of living with Dementia. Our staff are highly trained, so they understand how to minimise stress and anxiety – and create activities that are enjoyable and meaningful.



### Short-term care

This could be following a stay in hospital, a respite break for a week or two, or even just day care. However long you're with us, we'll make sure we understand what makes you feel most happy and at home.



### End of life care

To care for someone in their last moments is a great privilege. We will work closely with other health professionals to ensure your dignity and comfort.



# Our facilities

- Free Wi-Fi and iPads available for use
- Beautiful gardens with lovely sitting area
- Wheelchair access
- Lift to all floors
- You are welcome to bring your own furniture when moving in
- Regular visits from the chiropodist, hairdresser and district nurses
- Onsite laundry service is included
- We have a chaplain on request
- Call bells in all rooms to provide immediate support
- Sensor mat provided if required
- Chair lift on staircase for easy access

# Keep doing the things you love

We care about getting to know your, likes and dislikes and what is important for you to feel safe, secure and valued.

We run a number of different activities in our home, which you are welcome to get involved in if you wish. These include gardening, singing, exercise classes – there's lots of options to choose from. They're a great opportunity to try something new, and make new friendships.

## Good food matters

We make the most of mealtimes. Our onsite chef serves freshly-prepared, appetising and nutritional meals, with different choices every day.

We provide breakfast, lunch, and tea, with snacks and drinks available throughout the day. We can cater to special diets, including vegetarian, vegan, Kosher, Halal, and texture-modified meals.

**We want everyone to look forward to their food!**



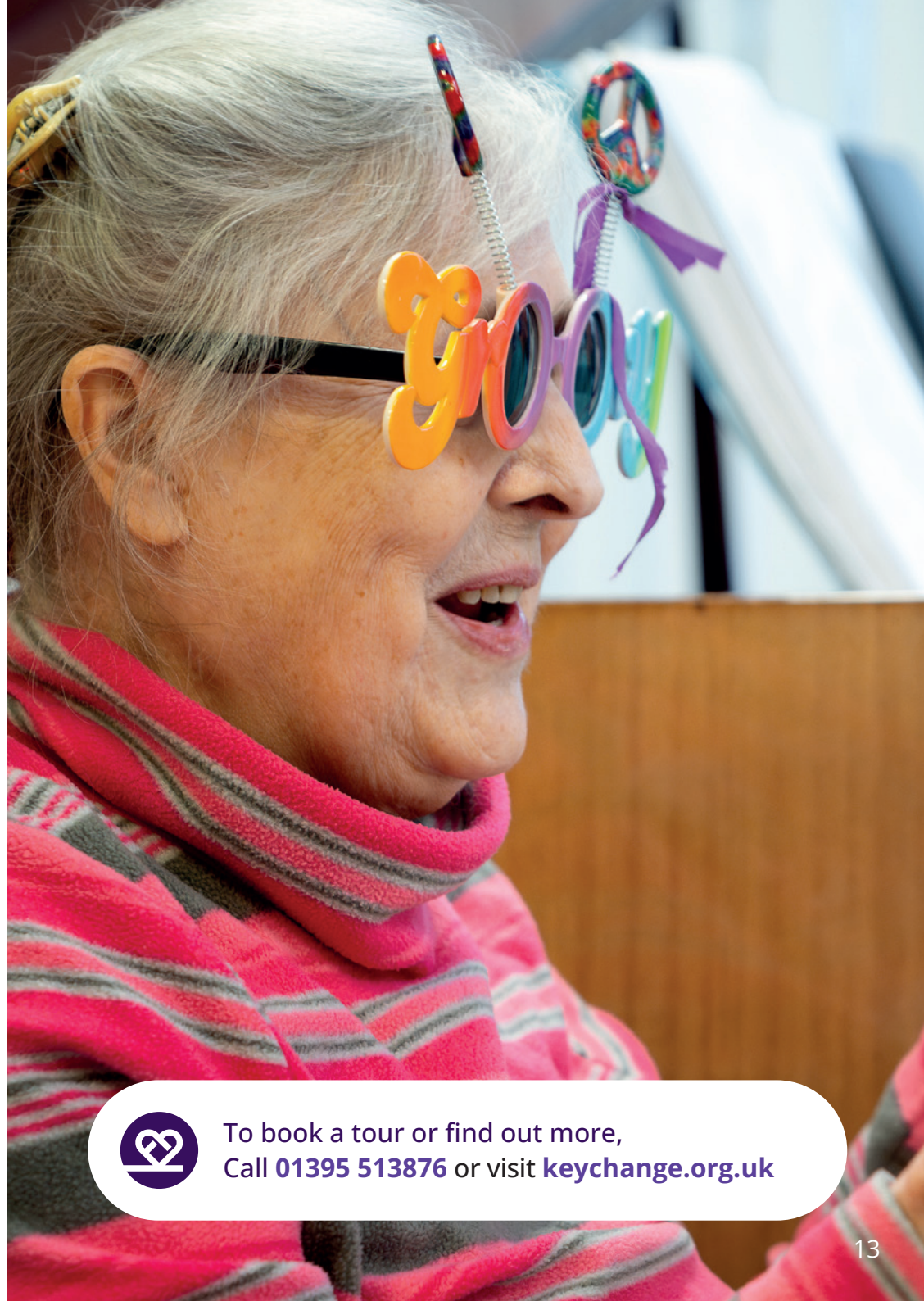
# Individual pricing, because everyone's unique

When you talk to us, we can give you an idea of the likely cost. We base your fee on an assessment of your individual care needs, usually following a visit.

**Please give us a call if you'd like some advice.  
We'll do all we can to help you.**

## Struggling to afford care?

You may be able to get help with care home costs. Your local council can do a financial assessment (means test) to see if you qualify for support - and how much they can cover. This assessment looks at your income, savings, and sometimes the value of your home.



To book a tour or find out more,  
Call **01395 513876** or visit **[keychange.org.uk](https://www.keychange.org.uk)**

# Take time to make the right decision for you

You may be feeling under pressure to choose a care home right away, but this isn't something that can be decided overnight.

We recommend you visit at least two other homes to get a feel for what you like. As a charity, we'll support you to make the right decision for you, whether that's in one of our homes or somewhere else.

## Will I lose my independence?

We understand how important it is to be independent, and this is something we will encourage, with support on hand whenever you need it.



## Next steps...

### Get in touch

- 1 Tell us** about your situation and we'll help you explore the options. Don't worry if you don't have all the answers yet.
- 2 Book a tour** **Join us** for a look around and decide whether we're a good fit for you.
- 3 Start your next chapter** Our residents often say that moving into one of our homes has given them **a whole new lease of life.**



We'd love to show you around and answer any questions you may have.

**Call us** 01395 513876  
**email** [roselawn@keychange.org.uk](mailto:roselawn@keychange.org.uk)  
**or visit** [keychange.org.uk/rose-lawn](http://keychange.org.uk/rose-lawn)



**or come and see us!**

Rose Lawn  
All Saints Road, Sidmouth  
Devon EX10 8EX



[keychange.org.uk](http://keychange.org.uk)

Transforming lives through the power of community